



Mid-States Concrete Industries **flexicore**

8"X48" HOLLOWCORE

(2 HOUR FIRE RATING)



1-800-236-1072
www.msprecast.com

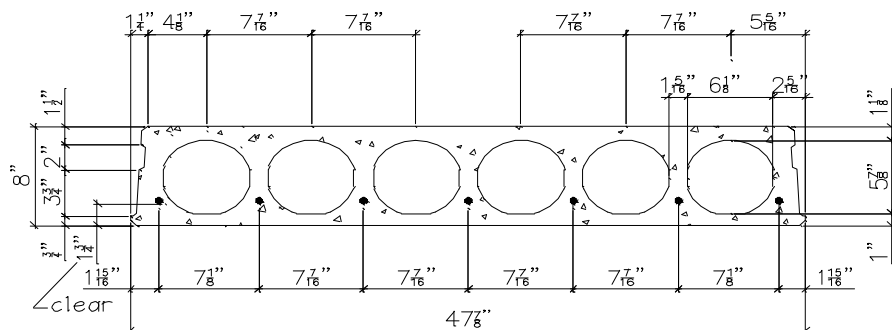
SAFE LOAD TABLE

Standard Designation	#/Size of Wire strand	Strand Area Sq.In.	Mu in Ft.-Kips per unit	SIMPLE SPAN IN FEET-CENTER TO CENTER OF END BEARINGS																																		
				10	11	12	13	14	15	16	17	18	19	20	21	22	23	24	25	26	27	28	29	30	31	32	33	34	35	36	37	38	39	40				
1.75-28510	2-1/2,5-6	1.391	145.03																		165	157	150	143	137	131	122	112	103	95	87	80	74	68	62			
1.75-78	7-1/2	1.071	115.66											228	215	203	192	182	173	157	142	129	117	107	97	88	80	73	67	61	55	50	45	41				
1.75-77	7-7/16	0.805	89.52										242	219	194	173	155	138	124	111	100	90	81	73	65	58	52	47	42	37	32	28	25	21				
1.75-58	5-1/2	0.765	85.44							296	276	258	234	207	183	163	146	130	116	104	93	84	75	67	60	54	48	42	38	33	29	25	22					
1.75-48	4-1/2	0.612	69.52	500	450	409	374	344	318	275	239	208	182	160	141	125	110	98	86	77	68	60	53	46	41	35	31	26	22									

UNIFORMLY DISTRIBUTED SUPERIMPOSED LOAD IN LBS. PER SQ. FT.

(Includes the live load plus dead load that is in addition to the weight of the grouted slabs in place.)

FOR LOADS & SPANS NOT SHOWN CONTACT MID-STATES CONCRETE INDUSTRIES at 1-800-236-1072



HOLLOWCORE- $f'_c=9000$ psi, $W_t=54$ psf
GROUT- $f'_c=5000$ psi

- 1- Dead Load, 54 psf grouted weight of structural unit.
- 2- Tabulated loads are based on ACI318-02 where $M_u=1.4 M_d+1.7 M_L$ and with all loads superimposed on the structural section considered as live load.
- 3- Camber is a result of the design rather than a design requirement. Heavy superimposed loads & / or long spans may cause excessive camber. Contact Mid-States Concrete Industries for more specific camber information.
- 4- Loads to the left of the solid stepped line are governed by shear
- 5- Loads underlined are controlled by permissible flexural tension at service loads.

April 8, 2003



Mid-States Concrete Industries **flexicore**

8"X48" HOLLOWCORE

(4 HOUR FIRE RATING)



1-800-236-1072
www.msprecast.com

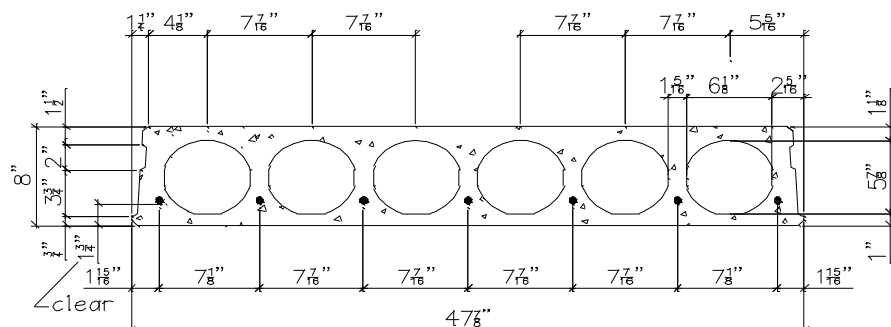
SAFE LOAD TABLE

Standard Designation	#/Size of Wire strand	Strand Area Sq.In.	Mu in Ft.-Kips per unit	SIMPLE SPAN IN FEET-CENTER TO CENTER OF END BEARINGS																																	
				10	11	12	13	14	15	16	17	18	19	20	21	22	23	24	25	26	27	28	29	30	31	32	33	34	35	36	37	38	39	40			
1.75-28510	2-1/2,5-6	1.391	145.03							296	276	258	242	228	202	179	159	142	126	113	101	90	80	71	63	56	50	44	38	33	28	24	20				
1.75-78	7-1/2	1.071	115.66			409	374	344	318	289	250	217	189	165	145	127	112	98	86	76	66	58	50	44	37	32	27	22									
1.75-77	7-7/16	0.805	89.52			408	340	286	242	206	176	152	130	112	97	84	72	62	53	44	37	31	25	20													
1.75-58	5-1/2	0.765	85.44	500	450	386	321	269	228	194	165	142	122	104	90	77	66	56	47	40	33	27	21														
1.75-48	4-1/2	0.612	69.52	456	367	300	248	206	172	145	122	103	87	73	62	51	42	34	28	21																	

UNIFORMLY DISTRIBUTED SUPERIMPOSED LOAD IN LBS. PER SQ. FT.

(Includes the live load plus dead load that is in addition to the weight of the grouted slabs in place.)

FOR LOADS & SPANS NOT SHOWN CONTACT MID-STATES CONCRETE INDUSTRIES at 1-800-236-1072



HOLLOWCORE- $f'_c=9000$ psi, $W_t=54$ psf
GROUT- $f'_c=5000$ psi

- 1- Dead Load, 54 psf grouted weight of structural unit.
- 2- Tabulated loads are based on ACI318-02 where $M_u=1.4 M_d+1.7 M_L$ and with all loads superimposed on the structural section considered as live load.
- 3- Camber is a result of the design rather than a design requirement. Heavy superimposed loads & / or long spans may cause excessive camber. Contact Mid-States Concrete Industries for more specific camber information.
- 4- Loads to the left of the solid stepped line are governed by shear

April 8, 2003



1-800-236-1072
www.msprecast.com

Mid-States Concrete Industries flexicore

8"X48" HOLLOWCORE

2" STRUCTURAL TOPPING
(2 HOUR FIRE RATING)



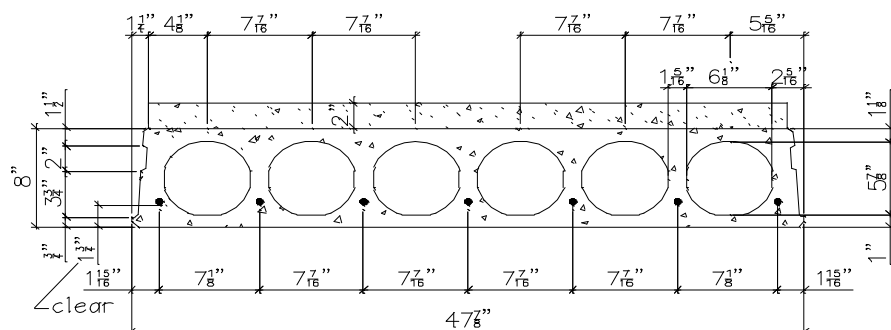
COMPOSITE DESIGN
SAFE LOAD TABLE

Standard Designation	#/Size of Wire strand	Strand Area Sq.In.	Mu in Ft.-Kips per unit	SIMPLE SPAN IN FEET-CENTER TO CENTER OF END BEARINGS																																	
				10	11	12	13	14	15	16	17	18	19	20	21	22	23	24	25	26	27	28	29	30	31	32	33	34	35	36	37	38	39	40			
1.75-28510	2-1/2,5-6	1.391	179.79																		197	187	178	170	162	154	142	129	118	105	94	83	73	64	56		
1.75-78	7-1/2	1.071	145.84											275	259	244	231	218	207	189	170	154	139	126	113	102	90	79	68	59	50	42	34	27			
1.75-77	7-7/16	0.805	114.46										293	272	240	213	190	169	150	134	120	107	95	85	75	66	55	46	37	29							
1.75-58	5-1/2	0.765	109.49							360	335	313	292	257	227	201	178	159	141	125	112	99	88	78	69	60	50	41	33	25							
1.75-48	4-1/2	0.612	89.79	615	553	502	458	421	389	348	300	261	228	199	174	153	135	118	104	91	80	70	61	52	45	38	30	22									

UNIFORMLY DISTRIBUTED SUPERIMPOSED LOAD IN LBS. PER SQ. FT.

(Includes the live load plus dead load that is in addition to the weight of the grouted slabs in place and 2" topping.)

FOR LOADS & SPANS NOT SHOWN CONTACT MID-STATES CONCRETE INDUSTRIES at 1-800-236-1072



HOLLOWCORE- $f'_c=9000\text{psi}$, $Wt=54\text{psf}$
GROUT- $f'_c=5000\text{psi}$

TOPPING- $f'_c=4000\text{psi}$, $Wt=25\text{psf}$

- 1- Dead Load, 79 psf grouted weight of structural unit.
- 2- Tabulated loads are based on ACI318-02 where $M_u=1.4 M_d+1.7 M_L$ and with all loads superimposed on the structural section considered as live load.
- 3- Camber is a result of the design rather than a design requirement. Heavy superimposed loads & / or long spans may cause excessive camber. Contact Mid-States Concrete Industries for more specific camber information.
- 4- Loads to the left of the solid stepped line are governed by shear
- 5- Loads underlined are controlled by permissible flexural tension at service loads.

April 8, 2003



1-800-236-1072
www.msprecast.com

Mid-States Concrete Industries **flexicore**

8"X48" HOLLOWCORE

2" STRUCTURAL TOPPING
(3 HOUR FIRE RATING)



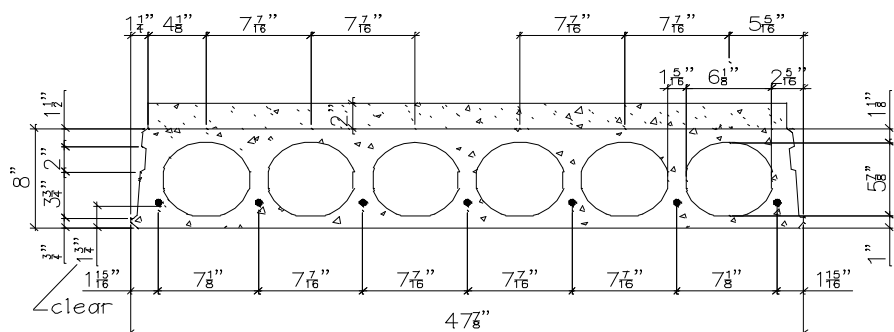
COMPOSITE DESIGN
SAFE LOAD TABLE

Standard Designation	#/Size of Wire strand	Strand Area Sq.In.	Mu in Ft.-Kips per unit	SIMPLE SPAN IN FEET-CENTER TO CENTER OF END BEARINGS																																			
				10	11	12	13	14	15	16	17	18	19	20	21	22	23	24	25	26	27	28	29	30	31	32	33	34	35	36	37	38	39	40					
1.75-28510	2-1/2,5-.6	1.391	179.79												259	244	231	218	207	195	175	157	141	127	114	102	91	81	72	64	56	49	43	37					
1.75-78	7-1/2	1.071	145.84							360	335	313	293	275	251	222	196	174	154	136	121	107	94	83	72	63	55	47	40	33	27	22							
1.75-77	7-7/16	0.805	114.46							356	306	265	229	199	173	151	131	114	99	86	74	63	53	45	37	30	23												
1.75-58	5-1/2	0.765	109.49				458	421	389	335	288	248	215	186	162	140	122	105	91	78	67	56	47	39	31	25													
1.75-48	4-1/2	0.612	89.79	615	553	502	428	358	302	256	218	186	158	135	115	98	83	70	58	48	39	30	23																

UNIFORMLY DISTRIBUTED SUPERIMPOSED LOAD IN LBS. PER SQ. FT.

(Includes the live load plus dead load that is in addition to the weight of the grouted slabs in place and 2" topping.)

FOR LOADS & SPANS NOT SHOWN CONTACT MID-STATES CONCRETE INDUSTRIES at 1-800-236-1072



HOLLOWCORE- $f'_c=9000$ psi, $W_t=54$ psf
GROUT- $f'_c=5000$ psi

TOPPING- $f'_c=4000$ psi, $W_t=25$ psf

- 1- Dead Load, 79 psf grouted weight of structural unit.
- 2- Tabulated loads are based on ACI318-02 where $M_u=1.4 M_d+1.7 M_L$ and with all loads superimposed on the structural section considered as live load.
- 3- Camber is a result of the design rather than a design requirement. Heavy superimposed loads & / or long spans may cause excessive camber. Contact Mid-States Concrete Industries for more specific camber information.
- 4- Loads to the left of the solid stepped line are governed by shear

April 8, 2003



1-800-236-1072
www.msprecast.com

Mid-States Concrete Industries flexicore

8"X48" HOLLOWCORE

2" STRUCTURAL TOPPING
(4 HOUR FIRE RATING)



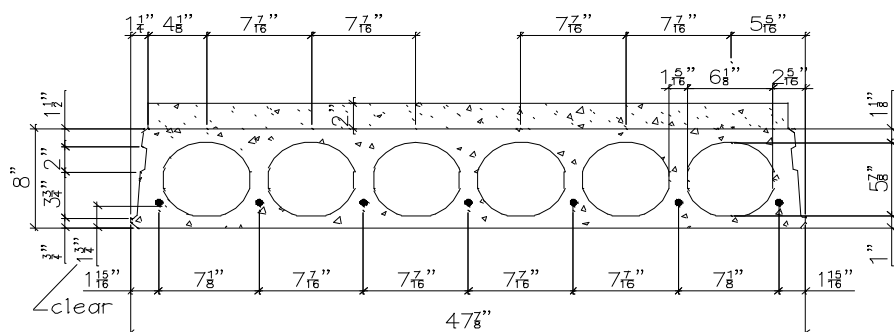
COMPOSITE DESIGN
SAFE LOAD TABLE

Standard Designation	#/Size of Wire strand	Strand Area Sq.In.	Mu in Ft.-Kips per unit	SIMPLE SPAN IN FEET-CENTER TO CENTER OF END BEARINGS																																	
				10	11	12	13	14	15	16	17	18	19	20	21	22	23	24	25	26	27	28	29	30	31	32	33	34	35	36	37	38	39	40			
1.75-28510	2-1/2,5-6	1.391	179.79								335	313	293	275	254	225	199	176	156	138	123	108	96	84	74	65	56	48	41	34	28	23					
1.75-78	7-1/2	1.071	145.84				458	421	389	360	319	276	240	209	182	159	138	121	105	91	79	68	58	49	41	33	27	20									
1.75-77	7-7/16	0.805	114.46			502	439	368	310	263	224	191	164	140	120	102	87	73	61	51	41	33	25														
1.75-58	5-1/2	0.765	109.49	615	553	500	415	347	292	247	210	179	152	130	110	93	79	66	55	44	35	27	20														
1.75-48	4-1/2	0.612	89.79	594	477	388	319	264	220	184	154	129	107	89	74	60	48	38	29	21																	

UNIFORMLY DISTRIBUTED SUPERIMPOSED LOAD IN LBS. PER SQ. FT.

(Includes the live load plus dead load that is in addition to the weight of the grouted slabs in place and 2" topping.)

FOR LOADS & SPANS NOT SHOWN CONTACT MID-STATES CONCRETE INDUSTRIES at 1-800-236-1072



HOLLOWCORE - $f'_c = 9000$ psi, Wt = 54 psf
GROUT - $f'_c = 5000$ psi

TOPPING - $f'_c = 4000$ psi, Wt = 25 psf

- 1- Dead Load, 79 psf grouted weight of structural unit.
- 2- Tabulated loads are based on ACI318-02 where $M_u = 1.4 M_d + 1.7 M_L$ and with all loads superimposed on the structural section considered as live load.
- 3- Camber is a result of the design rather than a design requirement. Heavy superimposed loads & / or long spans may cause excessive camber. Contact Mid-States Concrete Industries for more specific camber information.
- 4- Loads to the left of the solid stepped line are governed by shear

April 8, 2003